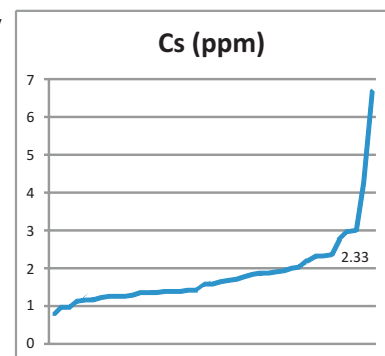


- Alkali-feldspar leucogranite and pegmatite
- K-feldspar–phyric granodiorite
- Feldspathic meta-arenite
- Interbedded semipelitic and pelitic gneiss
- Calcsilicate gneiss and marble
- Interbedded psammitic and calcsilicate gneiss
- Psammitic gneiss
- Tonalitic to granitic orthogneiss
- Monzogranite, strongly foliated to gneissic

**Snyder Lake till geochemistry  
(aqua regia partial digestion)  
Cs (ppm) in <63  $\mu$ m fraction**

- 0.77–0.96
- 0.961–1.28
- 1.281–1.4
- 1.41–1.76
- 1.761–2.03
- 2.031–2.72
- 2.721–4.24
- 4.241–6.65



**Figure 26:** Snyder Lake till geochemistry: partial digestion of <63  $\mu$ m fraction, Cs.